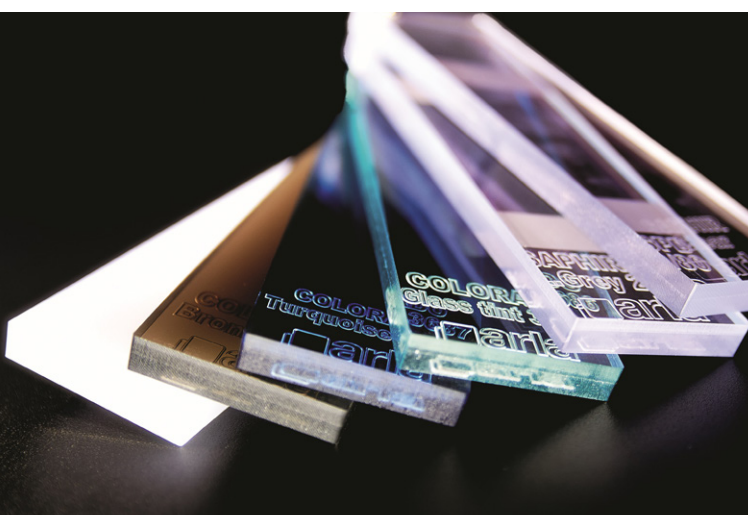




# Plastic sheets for your needs

ARLA PLAST PRODUCT PRESENTATION





# Welcome to Arla Plast!

We are a Swedish supplier of high-quality plastic sheets. We will do our outmost to fulfil your specific requirements.

Our products are known for high quality. We use high quality raw materials and our operators have many years of extrusion experience.

We work in partnership with our customers and suppliers to develop new products according to the market and customer needs.

Flexibility is one of our main objectives. This means we adapt our production to your specific needs. Colour matching, sheet structure, sheet format, masking, packaging, pallets and transport method are tailor-made to fit your needs.

## Arla Plast – Plastic sheets for your needs!

Transparent Polycarbonate	4
Opaque PC / Recycled PC	6
Multiwall	8
ABS - PC/ABS	10
PETG	12
Support & Service	14



Arne Larsson



Kenneth Synnersten

Arla Plast is a privately-owned family business. The company was started 1969 by Arne Larsson together with his brother Göran Larsson. The initials of Arne Larsson gave the company its name. Today the company is owned by the son of the founder Kenneth Synnersten and his family.

Arla Plast is now a major producer of plastic sheets in Europe. The company has three production plants and the original factory is in Borensberg, Sweden with two modern factories in Pelh imov and Kada in Czech Republic.



# Transparent polycarbonate sheets

## A virtually unbreakable material for the toughest environments

Transparent polycarbonate (PC) has high clarity and good optical performance for applications where good visibility is important. It also has excellent temperature performance and good fire properties; the material is even self-extinguishing. Transparent PC is well suited for thermoforming or machining. Arla Plast has a wide portfolio of transparent PC sheets.

Our transparent PC is available in different optical qualities, colours, frost, light transmission and with different surface structures. We also have a solar control version that helps to reduce temperature by letting the light pass but keeping the UV-radiation out. Special resins are used when FA (food approval) or FR (flame retardant) characteristics are needed. Most products can be chosen with a protecting UV-layer on top.

## PRODUCT RANGE TRANSPARENT POLYCARBONATE

**MAKROCLEAR™** – standard PC sheets for general purpose applications.

**MAKROCLEAR™ SQ** – selected high quality PC sheet.

**MAKROCLEAR™ FR** – flame retardant PC sheets UL94 V0

**MAKROCLEAR™ FA** – complies with food contact regulations.

**MAKROCLEAR™ HARDCOAT**– standard PC sheet with hard coating.

**SAPHIR®** – high quality PC sheets with hard coating.

**SAPHIR® FLEX** – selected quality PC with a unique flexible hard coating for curved applications.

**SAPHIR® FC** – PC sheet with a formable hard coating for visor applications.

**SAPHIR® AF** – PC sheet with Anti-fog coating.

**SAPHIR® AS** – antistatic coated PC for protection against electrostatic charging.

**MAKROLIFE™** – standard PC sheets with UV protection. 10 years warranty.

**COLORADO®** – coloured PC sheets with or without UV protection.

**COLORADO® LED** – coloured PC sheets with diffusing properties.

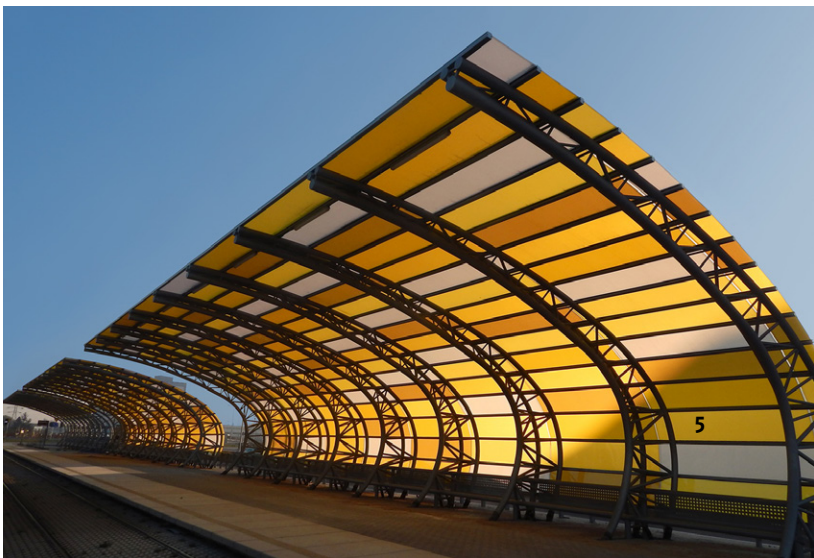
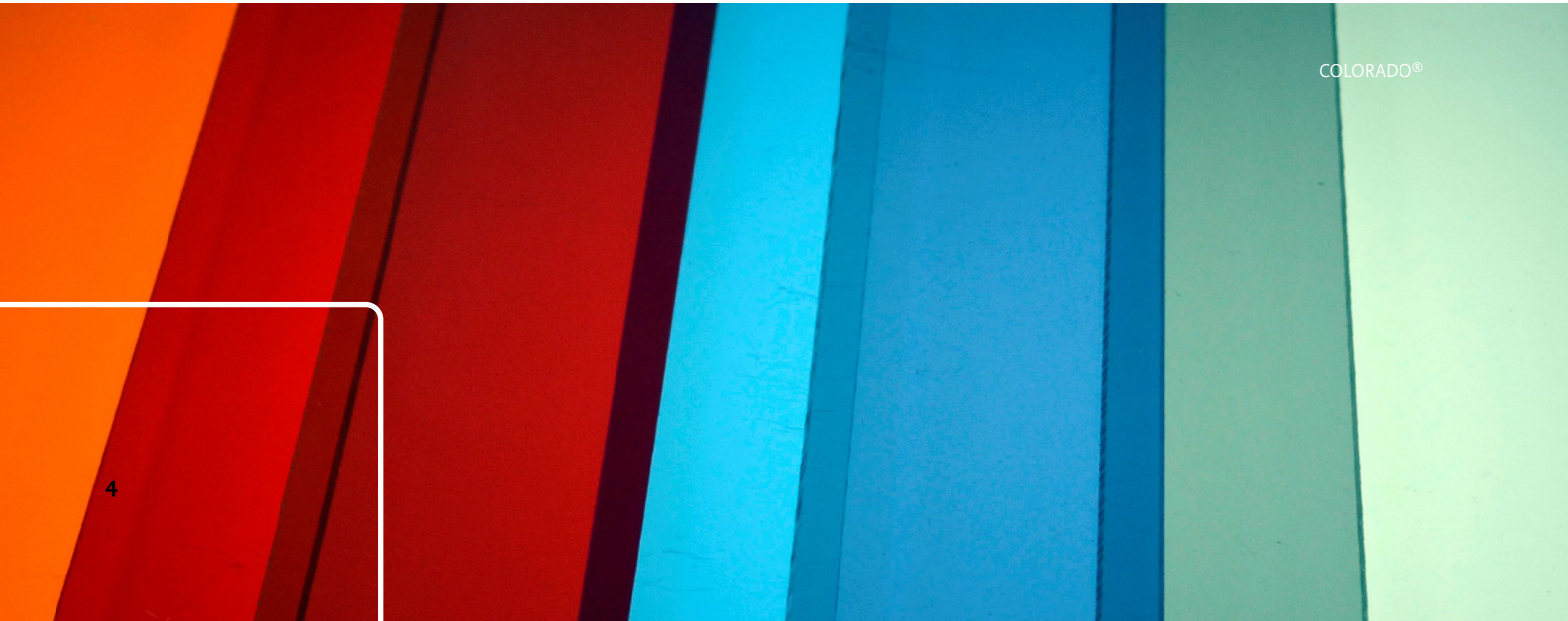
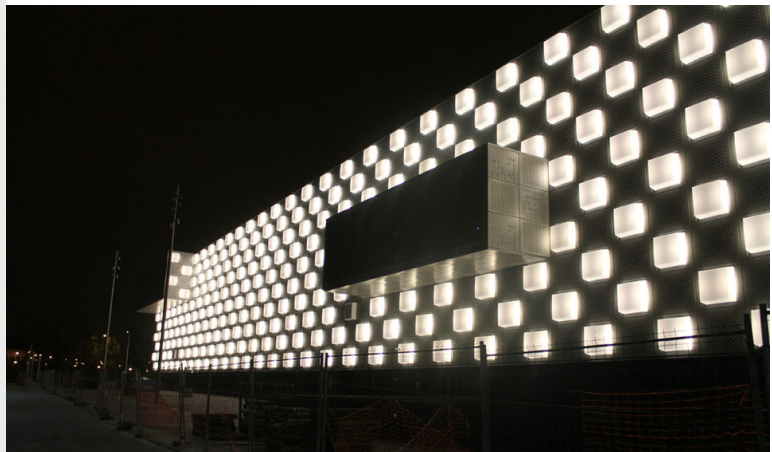
**COLORADO® FI** – coloured PC sheets for welding screens.



## APPLICATIONS FOR TRANSPARENT POLYCARBONATE

Transparent PC sheets are used in a wide variety of applications where unbreakable solutions are required.

**Examples:** Soundwall to reduce traffic noise, ice hockey rinks, machine protection, windows, roof lights and roofing solutions, luminaires, pool covers, signs, ski lift bubbles, visors.





# Opaque polycarbonate sheets

## Well suited for thermoforming, bending or machining

Opaque polycarbonate is a virtually unbreakable material for the toughest environments. It has superior impact resistance and a wide temperature range. It also has better fire properties; the material is even self-extinguishing. Opaque PC is well suited for thermoforming, bending or machining. Arla Plast offers opaque polycarbonate sheets – MAKROTECH™.

MAKROTECH™ is available with different surface structures and in all possible colours. We are experienced in extrusion of standard glossy colours, metallic colours as well as matt colours. Dual colours are also available thanks to coextrusion of two different colour layers. MAKROTECH™ can be chosen with or without stripes (for camera/robot identification). Many products can be chosen with a protecting UV-layer on top.



## PRODUCT RANGE OPAQUE POLYCARBONATE

**MAKROTECH™** – opaque PC sheets for colourful, unbreakable solutions.

**MAKROTECH™ UV** – one side UV protected sheet for outdoor applications.

**MAKROTECH™ MATT** – with a matt surface.

**MAKROTECH™ FA** – complies with food contact regulations.

**MAKROTECH™ FR** – flame retardant UL94 V0

**MAKROTECH™ with Stripe** – For camera/robot identification.



## APPLICATION AREAS FOR OPAQUE POLYCARBONATE

The sheets are used in a wide variety of applications where unbreakable solutions are required.

**Examples:** Suitcases where a combination of strength and low weight is needed, wall cladding for heavy duty environments such as hospitals or public environments, machine covers, containers, agricultural equipment, automotive, signage.

## APPLICATIONS RECYCLED POLYCARBONATE

The sheets are used in a wide variety of applications:

**Examples:** Trays for efficient parts handling at automotive assembly lines, packaging solutions, wall cladding, protection sheets, containers, thermoformed machine covers, solar panel covers.

# Recycled polycarbonate sheets

## Value for money

Recycled opaque PC sheets with different surface structures, with or without stripes (for camera/robot identification) and with or without co-extruded layer in different colours. RPC™ is a cost-effective solution where a virtual unbreakable solution is needed.

## PRODUCT RANGE RECYCLED POLYCARBONATE

**RPC™** – recycled polycarbonate.

**RPC™ UV** – one side UV protected sheet for indoor or outdoor applications.

**RPC™ Coex Colour** – black core with a coloured coex layer.

**RPC™ Colour** – coloured recycled polycarbonate.

**RPC™ with stripe** – for camera/robot identification.





# Multiwall polycarbonate sheets

## High impact strength and high light transmission combined with good insulation values

Multiwall is a lightweight sheet with a cellular structure. The construction offers high impact strength and high light transmission combined with good insulation values. Arla Plast offers multiwall polycarbonate sheets with maximum impact strength – MULTICLEAR®.

MULTICLEAR® is available in different thicknesses, cellular structures and in a choice of colours. Besides the smooth surface structure, HAMMER FINISH can be chosen. HAMMER FINISH has a special aesthetic appearance produced by creating a textured surface.

MULTICLEAR® is also available in a solar control version that helps to reduce temperature by letting the light pass but keeping the IR-radiation out. Our products general have good insulation capability and all come with 10 years warranty.

## PRODUCT RANGE MULTIWALL

**MULTICLEAR® BOX 2 WALL** – standard box structure.

**MULTICLEAR® BOX 3 WALL** – triple wall box structure.

**MULTICLEAR® STRONG 6 WALL** – six wall structure with low U-value and increased stiffness.

**MULTICLEAR® BOX 7 WALL** – seven-layer structure.

**MULTICLEAR® 5x** – five wall sheet with cross structure.

**MULTICLEAR® 11 WALL** – eleven wall structure with excellent thermal insulation and lower weight.

**MULTICLEAR® RPC** – multiwall sheet primarily based on regrind.

### All types are also available as

**ULTRA** – extra high or low weight and high light transmission.

**HAMMER FINISH** – special product with aesthetic appearance produced by creating a texture in the inner surface.

**SOLAR CONTROL** – multiwall sheet that allows the light transmission whilst stopping the heat building up.



## APPLICATIONS MULTIWALL

The sheets are used in a wide variety of applications not only in building applications.

**Examples:** Roofing for industrial buildings or shopping gallerias, sky lights, covered walk ways, wall cladding, pool covers, green houses, lightweight roof solution for terraces, carports, sport arena roofing, protective covers, big-size signage and advertising panels, illuminated wall cladding using multicolor LED. The Arla Plast office (front page) is cladded with multiwall.





# ABS - PC/ABS

## Easy to thermoform and fabricate

ABS is a material with high impact strength. ABS also has impressive thermal qualities and is easy to thermoform and fabricate. This makes ABS a very popular material amongst thermoformers. Arla Plast offers a wide range of ABS based products – ATECH®.

We have a selection of popular structures and long experience in colour matching and co-extrusion of dual colours. Different top layers are available such as: PMMA (matt or glossy), Matt ABS, ASA (matt or semi-gloss). Stripes can be applied for optical identification in packaging. All products can be chosen with an extra UV stabilizer to improve weather resistance.

Recycling is an important part of the ABS business. Arla Plast can offer all possibilities in this field. Our total recycling concept, covering all types of ABS will help you minimize the material cost at the same time as reducing the environmental impact. Thanks to our advanced technology and long experience in recycling, off-cuts from ATECH® sheets can be reused in new sheets.

PC/ABS is a modern solution for demanding thermoforming applications. PC/ABS offers good impact strength and a wider working temperature range with better fire performance than ABS.

Arla Plast offers PC/ABS – ATECH® 5100 (50/50) or (70/30) with or without UV stability. Matt ABS surface optional on one or both sides. Different colours and different surface structures can be chosen. Arla Plast also offers a PC/ABS based product that fulfils the ECE R118.03 for interiors in buses, ATECH 5103.02-R118-7-8.

## PRODUCT RANGE OF SUPER HIGH IMPACT ABS AND PC/ABS

ATECH® 2000R – ABS recycled.

ATECH® 2100R – ABS recycled with a matt surface layer.

ATECH® 3000 – with a semi-gloss surface layer that thermoforms quickly.

ATECH® 3100 – with matt surface layer that remains matt also after thermoforming.

ATECH® 3200 – with a surface layer of high-gloss PMMA.

ATECH® 3300 – with a matt or semi-gloss surface layer of ASA material.

ATECH® 3400 – with a matt coloured PMMA surface layer.

ATECH® 5100 – PC/ABS with a matt ABS surface layer.

ATECH® 5103.02-R118-7-8 – PC/ABS with matt UV stabilized ABS surface layer, is homologated to ECE R118.03.



## APPLICATIONS ABS - PC/ABS

**Examples:** Machine covers, interior automotive parts, ski boxes, demanding exterior automotive parts, tough industrial applications, advertising, building and construction, thermoformed covers.





# Transparent and opaque PETG sheets

**Easy to fabricate and thermoform without pre-drying.** PETG is easy to fabricate and thermoform without pre-drying, hence faster cycle times and hence cost savings can be achieved. Thermoforming and bending can be done with great accuracy and with maintained visual clarity.

Arla Plast offers **PETG high impact transparent sheets – GRIPHEN®**. Besides transparent sheets, GRIPHEN® can be chosen in a wide range of colours and the unique frosty (satin) look. UV protection is available for most products. GRIPHEN® as a standard product is food approved.

We also offer **PETG high impact opaque sheets – GRIPHTECH®**. GRIPHTECH® is an opaque coloured co-polyester sheet which combines extremely good fabrication and thermo-forming properties with good impact strength. The product has good fire performance, it is self-extinguishable and has low smoke generation during a fire.

We are experienced in extrusion of standard glossy colours as well as matt colours. Most products can be chosen with a UV-protection.

## PRODUCT RANGE PETG TRANSPARENT

- GRIPHEN® – standard transparent PETG sheet.
- GRIPHEN® UV – Griphen for outdoor use.
- GRIPHEN® COLOUR – PETG sheets in a wide range of transparent colours and an opal range.
- GRIPHEN® COLOR UV – Griphen Colour for outdoor use.
- GRIPHEN® FROST – anti-reflex frosty surface.

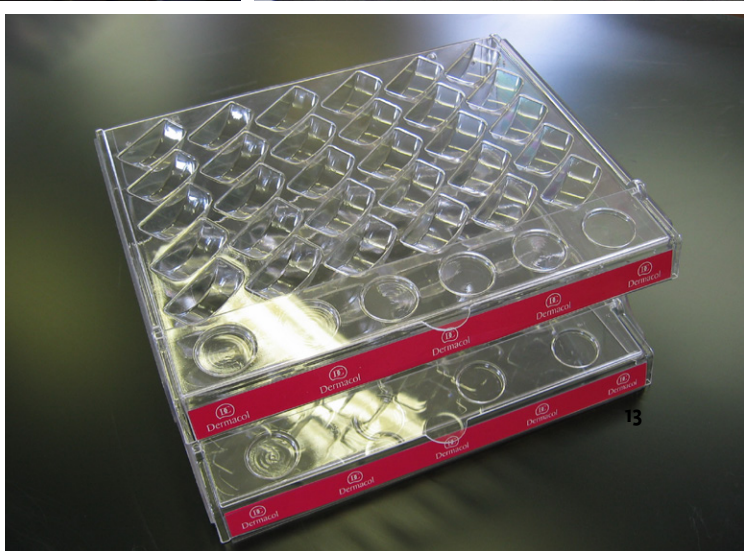
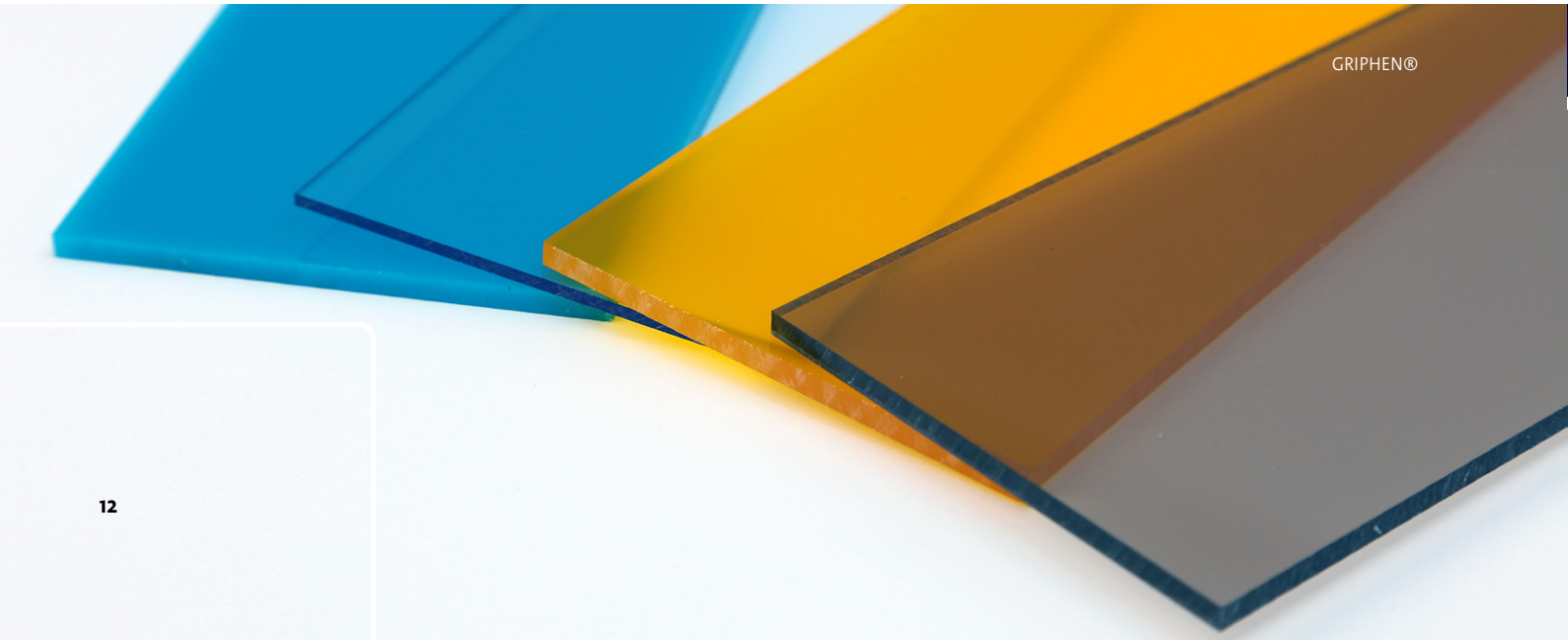
## PRODUCT RANGE PETG OPAQUE

- GRIPHTECH® – standard opaque PETG sheet.
- GRIPHTECH® UV – Griphtech for outdoor use.
- GRIPHTECH® FROST – for a frosty cool look.



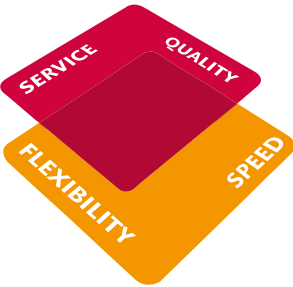
## APPLICATIONS TRANSPARENT AND OPAQUE PETG

Examples: Indoor and outdoor signs, shelving and racking systems, food displays / bin / dividers, exhibition boxes, point of sale interior, thermoformed covers, vending machine faces, ski lifts, industrial equipment, machine covers and many different kinds of technical parts.





# Our cornerstones



**When choosing Arla Plast you can expect:**

- Products and personal service of highest quality.
- We are flexible. We adapt our production to your needs in terms of format, masking, packaging, pallets or way of delivery. Our minimum order quantities are competitive, and we are flexible to support individual needs.
- Quick decisions, quick deliveries. Standard stock items are shipped the same or next working day.
- Find your colour. We help you match the right colour tone with reliability.
- We support you. Our experienced technicians give technical support on how to use our products. If you want to make any changes to your order, our friendly order team is keen to help you.



# Additional services

Arla Plast can offer several additional services in order to save costs in later operations.







At Arla Plast we have developed and fine-tuned the extrusion techniques for plastic sheets since the 60's. We have developed the professional knowledge over many years, the machinery resources, the feel for quality and the willingness to always do a good job. Our experience ensures that you receive a product which satisfies your needs.

Good product quality is our primary target to be a good supplier, but this is not enough. Thanks to the cooperation with our customers and suppliers we have learnt the meaning of high flexibility, delivery precision and good service in order to build trust and long-term relations.

Arla Plast cares about the environment. In our production we mainly use energy from renewable resources to power our modern machines. Recycling is a natural part of our operations that is beneficial for the economy as well as for the environment.

Today Arla Plast is one of the leading extruders of plastic sheets in Europe. Every day we strive for becoming better by developing new materials, new quality specifications and taking care by lowering our environmental impact. All in order to become and to remain your best long-term partner.



**Arla Plast AB** Box 33, Västanåvägen, SE-590 30 Borensberg, Sweden, Phone +46 141 20 38 00,  
Fax +46 141 414 30, E-mail: [info@arlaplast.se](mailto:info@arlaplast.se)

**Arla Plast s.r.o** Královský Vrch 1982, CZ-432 01 Kadan, Czech Republic, Phone: +420 474 698 030,  
Fax: +420 474 698 040, E-mail: [infocz@arlaplast.com](mailto:infocz@arlaplast.com)