

**Plastic sheets
for your needs**



Welcome to Arla Plast

We are a Swedish supplier of high-quality plastic sheets. We will do our outmost to fulfil your specific requirements

Founded in 1969 in Borensberg, Sweden, Arla Plast began by producing ABS sheets and soon expanded into polycarbonate with recycled content. Through the 1980s and '90s, we pioneered co-extrusion for UV protection and expanded across Europe, launching a recycling program and investing in advanced production.

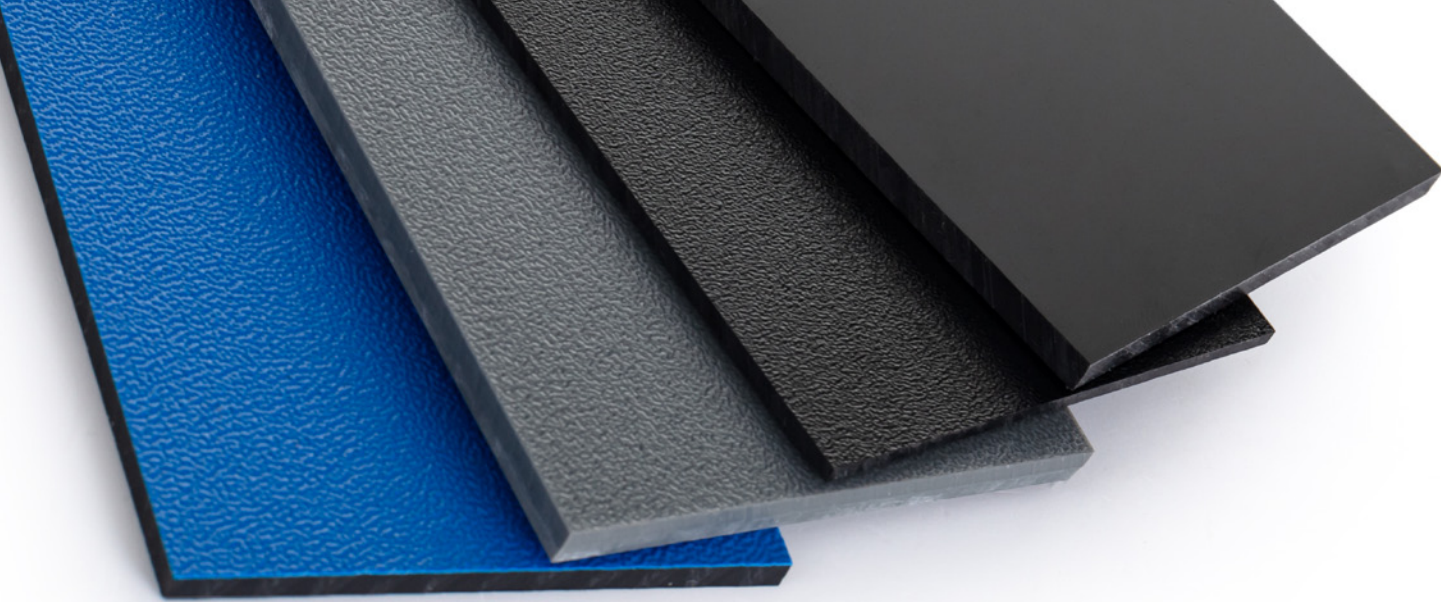
In 2006 and 2012, we opened new facilities in the Czech Republic to produce Multiwall and PETG sheets.

Ongoing investments in our production sites enabled us to broaden our portfolio with a wide range of materials, each offering unique performance characteristics — including high-performance grades.

Our growth continued with a Nasdaq Stockholm listing in 2021 and the acquisitions of Alphaplex (2022) and Nudec (2024), strengthening our European footprint.



Arne Larsson, company co-founder (1969)



Our products stand out for their superior quality – from carefully selected raw materials to precise processing by operators with many years of extrusion expertise

We work in partnership with our customers and suppliers to develop new products according to the market and customer needs.

Flexibility is one of our main objectives. This means we adapt our production to your specific needs. Colour matching, sheet structure, sheet format, masking, packaging, pallets and transport method are tailor-made to fit your needs.

56

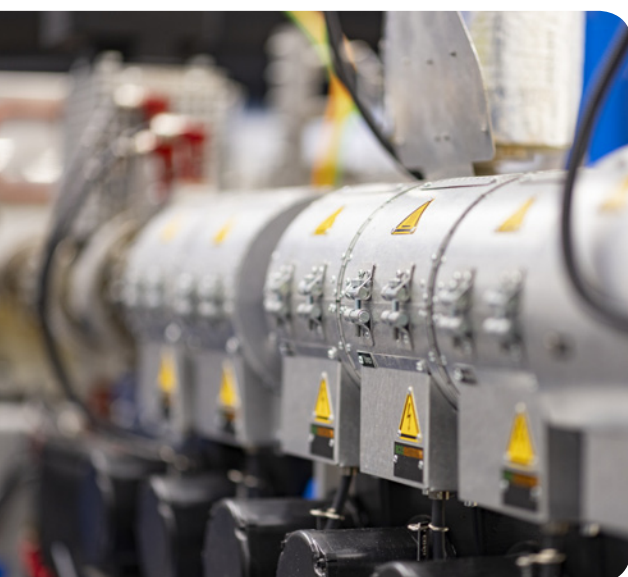
years in business

3

facilities

700+

customers in 45+ countries



Sustainability at Arla Plast is built on innovation, environmental data, and a long-term mindset — ensuring performance and durability today, without compromising tomorrow

Sustainability is an integral part of our business. As a leading manufacturer of plastic sheets, we reduce environmental impact and promote a circular, low-carbon future.

We focus on efficient use of raw materials, recycling of production waste, investments in renewable energy, and offer recycling solutions in cooperation with our customers.

Our commitments are backed by verified Life Cycle Assessments (LCA) and Environmental Product Declarations (EPD).



We recycle nearly 100% of regrind from production and customers



Management systems
ISO 9001, 14001, 45001
and ISO 50001



~87% of electricity consumed comes from renewable sources



Scan & learn more about sustainability at Arla Plast

Transparent polycarbonate sheets

A virtually unbreakable material for the toughest environments

Transparent polycarbonate (PC) has high clarity and good optical performance for applications where good visibility is important.

It also has excellent temperature performance and good fire properties; the material is even self-extinguishing. Transparent PC is well suited for thermoforming or machining. Arla Plast has a wide portfolio of transparent PC sheets.

Our transparent PC is available in different optical qualities, colours, frost, light transmission and with different surface textures. We also have a solar control version that helps to reduce temperature by letting the light pass but keeping the UV-radiation out. Special resins are used when FA (food approval) or FR (flame retardant) characteristics are needed. Most products can be chosen with a protecting UV-layer on top.

SAPHIR® - High optical hard coated polycarbonate

SAPHIR® polycarbonate sheets feature a durable hard coating that resists scratches, abrasion, and harsh chemicals — ensuring long-lasting clarity and surface protection.

Engineered for exceptional optical performance, these sheets provide minimal distortion, making them ideal for visually demanding applications such as ice hockey rinks, automotive lamination, and security glazing.

The SAPHIR® range includes options with anti-fog, antistatic, and flexible coatings, suited for both flat and gently formed installations.

Designed for the most visually and safety-critical environments, SAPHIR® delivers high-end performance where it matters most.



Extreme resistance to harsh environments



High clarity & optical performance



Heat resistance & self-extinguishing



Forming and machining options



Wide portfolio of variants



Explore the full range of possibilities online

Product range

Clear



POLYCARBONATE CLEAR

Standard PC sheets for general purpose applications.

POLYCARBONATE CLEAR SQ

Selected high quality PC sheet.

POLYCARBONATE CLEAR UV

Standard PC sheets with UV protection. 10 years warranty.

POLYCARBONATE CLEAR AR

Standard polycarbonate sheet with a matt textured surface preventing reflection.

POLYCARBONATE CLEAR FR

Flame retardant PC sheets UL94 V0.

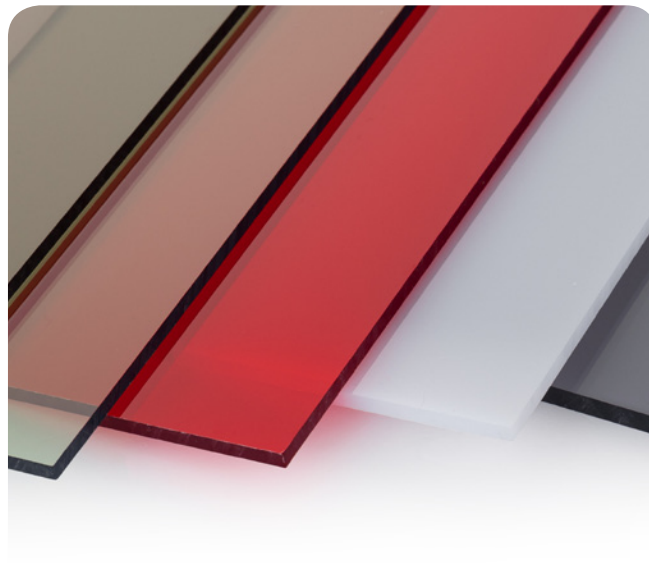
POLYCARBONATE CLEAR FA

Complies with food contact regulations.

POLYCARBONATE CLEAR HC

Standard PC sheet with hard coating.

Coloured



POLYCARBONATE COLOURED

Coloured PC sheets.

POLYCARBONATE COLOURED UV

Coloured PC sheets with UV protection.

POLYCARBONATE COLOURED UV SC

Solar control coloured PC with heat reducing properties for outdoor use.

POLYCARBONATE COLOURED LED

Coloured polycarbonate sheet for LED applications.

POLYCARBONATE COLOURED LED UV

Coloured polycarbonate sheet for LED applications for outdoor use.

POLYCARBONATE COLOURED FI-01

Coloured PC sheets for welding screens in arc welding areas.

Saphir



POLYCARBONATE SAPHIR® HC

High quality PC sheets with hard coating.

POLYCARBONATE SAPHIR® FLEX

Selected quality PC with a flexible hard coating for curved applications.

POLYCARBONATE SAPHIR® FC

PC sheet with a formable hard coating for visor applications.

POLYCARBONATE SAPHIR® AF

PC sheet with Anti-fog coating.

POLYCARBONATE SAPHIR® AS

PC sheet with antistatic coating for protection against electrostatic charging.

POLYCARBONATE SAPHIR® SPD

Screen printed and hard coated PC sheet.

POLYCARBONATE SAPHIR® COLOURED HC

Coloured PC sheet with hard coating.

POLYCARBONATE SAPHIR® HOQ-1S

Highest quality PC with 1-side hard coating, suitable for lamination with glass.



Did you know?

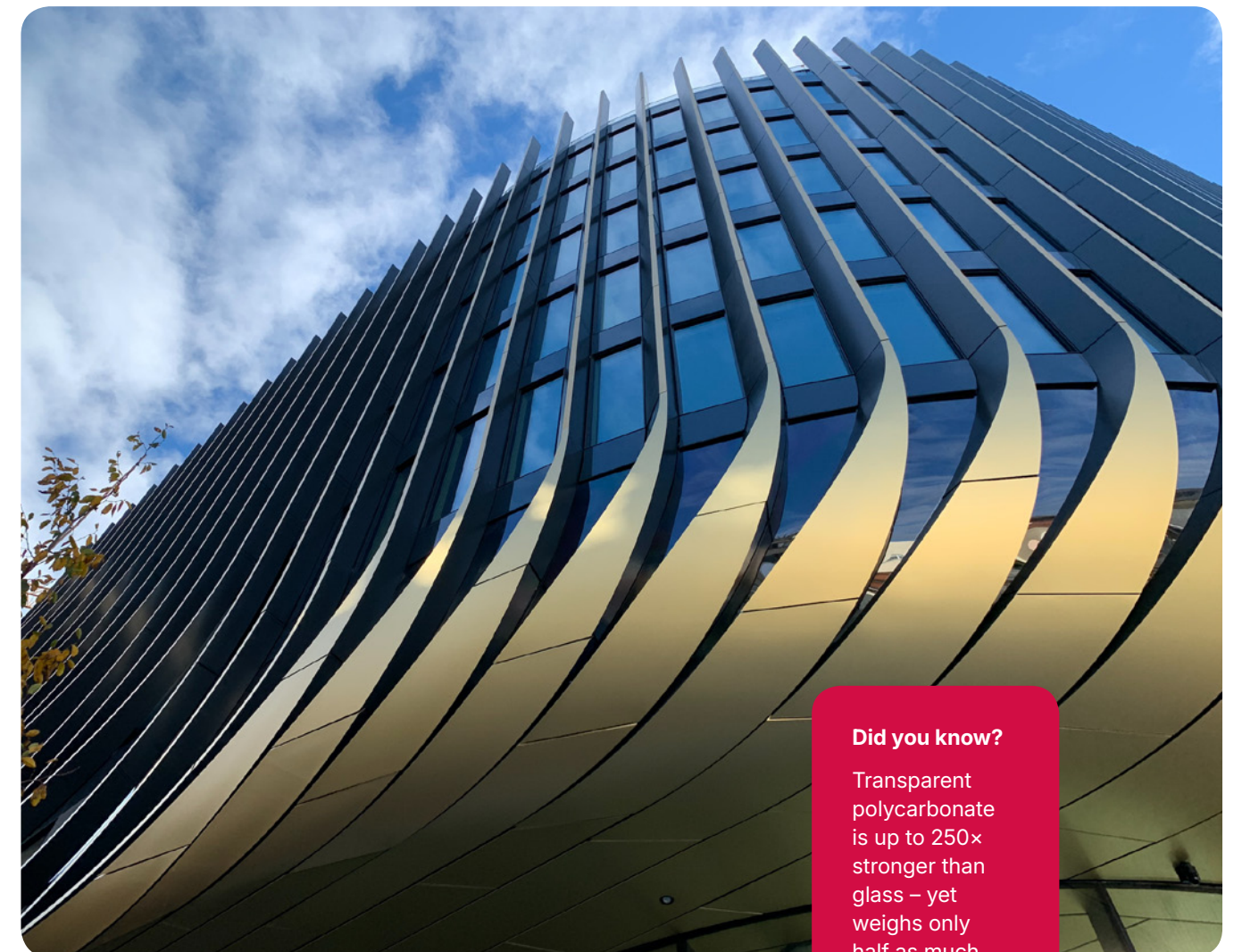
With the right coating, transparent PC can block 99% of harmful UV radiation while still letting the light in

Applications

Soundwall to reduce traffic noise, ice hockey rinks, machine protection, windows, roof lights and roofing solutions, luminaires, pool covers, signs, ski lift bubbles, visors.



Transparent PC sheets are used in a wide variety of applications where unbreakable solutions are required



Central Business District Praha, PC Clear UV 6mm (2025)

Did you know?

Transparent polycarbonate is up to 250x stronger than glass – yet weighs only half as much

Opaque polycarbonate sheets

Durable, versatile, and designed for demanding applications

POLYCARBONATE OPAQUE ATECH® is an exceptionally durable material, ideal for tough environments. It offers outstanding impact resistance, performs excellently across a wide temperature range, and features superior fire properties – including self-extinguishing capabilities.

Arla Plast's **POLYCARBONATE OPAQUE ATECH® 7000** is suitable for various processing methods, including but not limited to thermoforming, bending, and machining, making it a versatile choice for numerous applications. It is available in a wide range of surface textures and colours, including glossy, metallic, and matte finishes.

Additionally, we offer a separate product series made from recycled material: **POLYCARBONATE OPAQUE ATECH® 7000R** providing a more sustainable choice without compromising on quality and performance. This series is also available in a variety of surface textures and colours, including glossy, metallic, and matte finishes. Just like the standard series, it benefits from advanced coextrusion technology, allowing for dual-colour sheets with two distinct layers.

For enhanced functionality, **POLYCARBONATE OPAQUE ATECH®** can be supplied with stripes for camera and robot identification. Many variants are also available with a protective UV layer, providing increased resistance to weathering and UV radiation, making them ideal for outdoor use.



Extreme resistance to harsh environments



Wide temperature range



Heat resistance & self-extinguishing



Forming and machining options



Various surface finishes



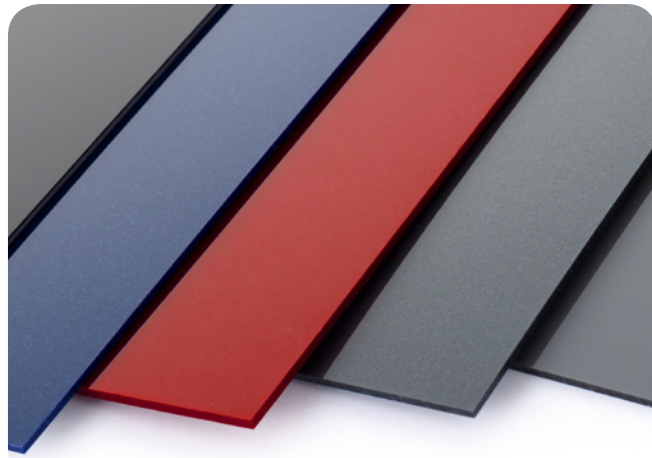
Sustainable choice without compromise



Explore the full range of possibilities online

Product range

Opaque Polycarbonate



POLYCARBONATE OPAQUE ATECH® 7000

Opaque PC sheets for colourful, unbreakable solutions.

POLYCARBONATE OPAQUE ATECH® 7003

UV protected sheets for outdoor application (also available as two-sided UV).

POLYCARBONATE OPAQUE ATECH® 7100

Matt topside surface.

POLYCARBONATE OPAQUE ATECH® 7000 FA

Complies with UK and FDA food contact regulations.

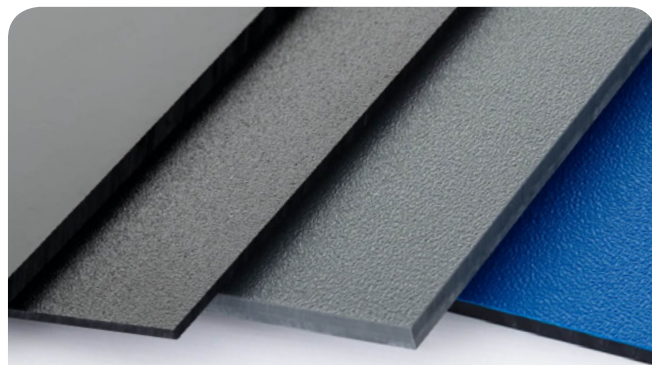
POLYCARBONATE OPAQUE ATECH® 7000 FR

Flame retardant with V0 and 5VA classification to UL-94.

POLYCARBONATE OPAQUE ATECH® 7000 STR

Stripe(s) applied for special trays for camera/robot identification.

Recycled Opaque Polycarbonate



POLYCARBONATE OPAQUE ATECH® 7000R

Recycled opaque PC sheets

POLYCARBONATE OPAQUE ATECH® 7003R

UV protected sheets for outdoor application (also available as two-sided UV).

POLYCARBONATE OPAQUE ATECH® 7000R CCO

Dual-colour sheets with two distinct layers.

POLYCARBONATE OPAQUE ATECH® 7100R

Matt topside surface.

POLYCARBONATE OPAQUE ATECH® 7000R STR

Stripe(s) applied for special trays for camera/robot identification.

The sheets are designed for diverse applications that demand unbreakable performance and low weight

Applications

Opaque Polycarbonate

Suitcases where a combination of strength and low weight is needed, wall cladding for heavy duty environments such as hospitals or public environments, machine covers, containers, agricultural equipment, automotive, signage.



Recycled Opaque Polycarbonate

Trays for efficient parts handling at automotive assembly lines, packaging solutions, wall cladding, protection sheets, containers, thermoformed machine covers, solar panel covers.



Did you know?

With advanced co-extrusion, one sheet can combine two different colours or surfaces in a single product

Multiwall polycarbonate sheets

High impact strength and high light transmission combined with good insulation values

Multiwall is a lightweight sheet with a cellular structure. The construction offers high impact strength and high light transmission combined with good insulation values.

Arla Plast offers multiwall polycarbonate sheets with maximum impact strength – MULTICLEAR®.

MULTICLEAR® is available in different thicknesses, cellular structures and in a choice of colours. Besides the smooth surface structure, HAMMER FINISH can be chosen. HAMMER FINISH has a special aesthetic appearance produced by creating a textured surface.

MULTICLEAR® is also available in a solar control version that helps to reduce temperature by letting the light pass but keeping the IR-radiation out. In general, our products have good insulation capability and all come with 10 years warranty.



High impact resistance



High light transmission with IR protection



Lightweight construction with hollow tubes



Good insulation values



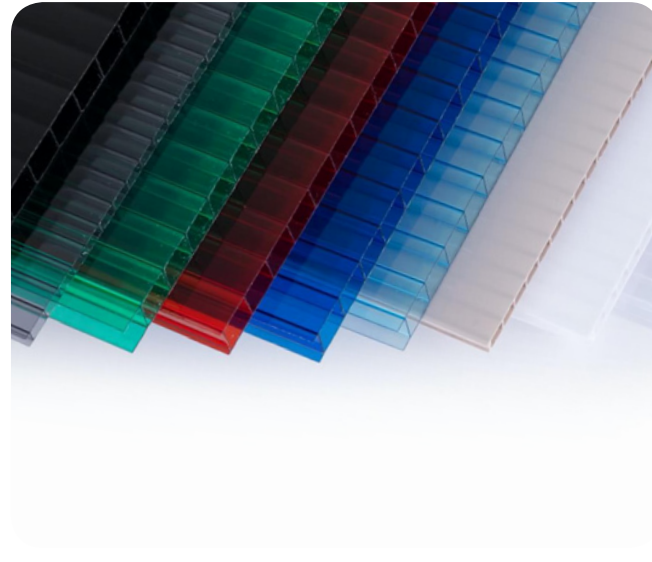
10-year warranty



Explore the full range of possibilities online

Product range

Multiwall



MULTICLEAR® BOX 2 WALL

Standard box structure.

MULTICLEAR® BOX 2 WALL HG

Two wall structure with modified rib distance and different surface weight.

MULTICLEAR® BOX 3 WALL

Triple wall box structure.

MULTICLEAR® STRONG 6 WALL

Six wall structure with low U-value and increased stiffness.

MULTICLEAR® BOX 7 WALL

Seven-layer structure.

MULTICLEAR® 5X

Five wall sheet with cross structure.

MULTICLEAR® 11 WALL

Eleven wall structure with excellent thermal insulation and lower weight.

MULTICLEAR® RPC

Multiwall sheet range primarily based on regrind.

All types are also available as:



ULTRA

Extra high or low weight and high light transmission.



HAMMER FINISH

Special product with aesthetic appearance produced by creating a texture in the inner surface.



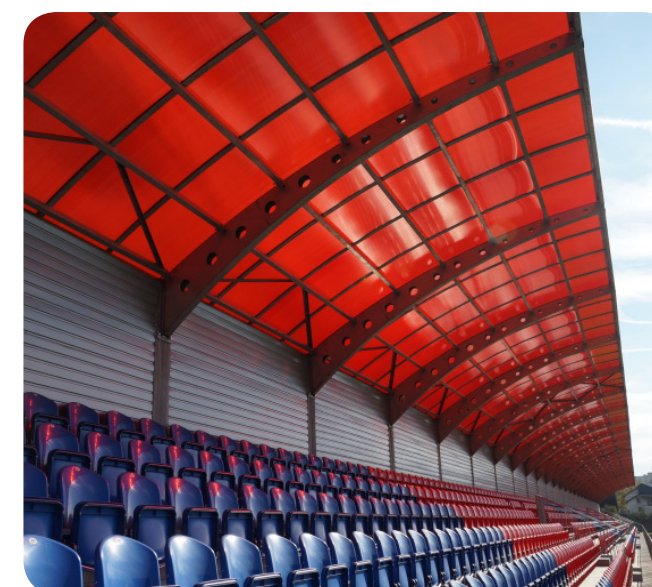
SOLAR CONTROL

Multiwall sheet that allows the light transmission whilst stopping the heat building up.

Applications

Roofing for industrial buildings or shopping galleries, skylights, covered walkways, wall cladding, pool covers, greenhouses, lightweight roof solution for terraces, carports, sport arena roofing, protective covers, big-size signage and advertising panels, illuminated wall cladding using multicoloured LEDs. The Arla Plast office (on page 2) is clad with MULTICLEAR®.

The sheets are used in a wide variety of applications, beside of building applications



Did you know?

Multiwall PC can deliver up to 60% better thermal insulation than glass—while remaining virtually unbreakable

ABS sheets

High-performance solutions for thermoforming & fabrication

Arla Plast offers a wide range of ABS and PC/ABS sheets designed mainly for demanding thermoforming applications. Known for their high impact strength, excellent thermal properties, and ease of fabrication, these materials are widely used across various industries.

Our ABS-based product range provides customisable solutions with a variety of surface structures, colours, and top-layer options, including:

- PMMA (matt or glossy)
- Matt ABS
- ASA (matt or semi-gloss)

For added weather resistance, all products are available with UV stabilisation. Stripes can also be added for optical identification in packaging applications. Additionally, Arla Plast offers an ABS-based product that meets Annex 6 & 7 of the ECE R118.03 regulation, ensuring compliance with fire safety requirements for bus interiors.

PC/ABS sheets

Enhanced performance for demanding applications

For applications requiring enhanced impact resistance, a wider operating temperature range, and improved fire performance, Arla Plast offers PC/ABS solutions:

- **PC/ABS ATECH® 5100**
Available in (50/50) or (70/30) compositions, with optional UV stabilisation. Can be produced with a matt ABS surface on one or both sides.
- **PC/ABS ATECH® 5103.02-R118-7-8**
A PC/ABS - based product that meets Annex 6, 7 & 8 of the ECE R118.03 regulation, ensuring compliance with fire safety requirements for bus interiors.

Sustainable & cost-efficient solutions



Sustainability is a key focus at Arla Plast. We prioritise efficient reuse of ABS materials, helping to reduce both material costs and environmental impact. Thanks to our recycling technology, off-cuts from ABS sheets can be reused in new sheets without compromising quality.

Discover the full ABS portfolio online



Explore PC/ABS solutions online



High impact resistance



Excellent thermal stability



Easy thermoforming & manufacturing



Various surfaces & colors with UV protection



Certified for demanding applications

Product range

ABS & PC/ABS



ABS Sheets

ABS ATECH® 3000

Semi-gloss ABS.

ABS ATECH® 3100

Matt ABS that remains matt after thermoforming.

ABS ATECH® 3200

High-gloss PMMA surface layer.

ABS ATECH® 3300

Matt or semi-gloss ASA surface layer.

ABS ATECH® 3400

Matt PMMA surface layer.

ABS ATECH® 3103 - R118-6-7

ABS-based product that meets Annex 6 & 7 of the ECE R118.03 regulation, ensuring compliance with fire safety requirements for bus interiors.



Recycled ABS Sheets

ABS ATECH® 2000R

Recycled ABS.

ABS ATECH® 2100R

Recycled ABS with a matt surface layer.

ABS ATECH® 2200R

Recycled ABS with a high-gloss PMMA surface layer.

ABS ATECH® 2300R

Recycled ABS with a matt or semi-gloss ASA surface layer.

ABS ATECH® 2400R

Recycled ABS with a matt PMMA surface layer.

PC/ABS Sheets

PC/ABS ATECH® 5100

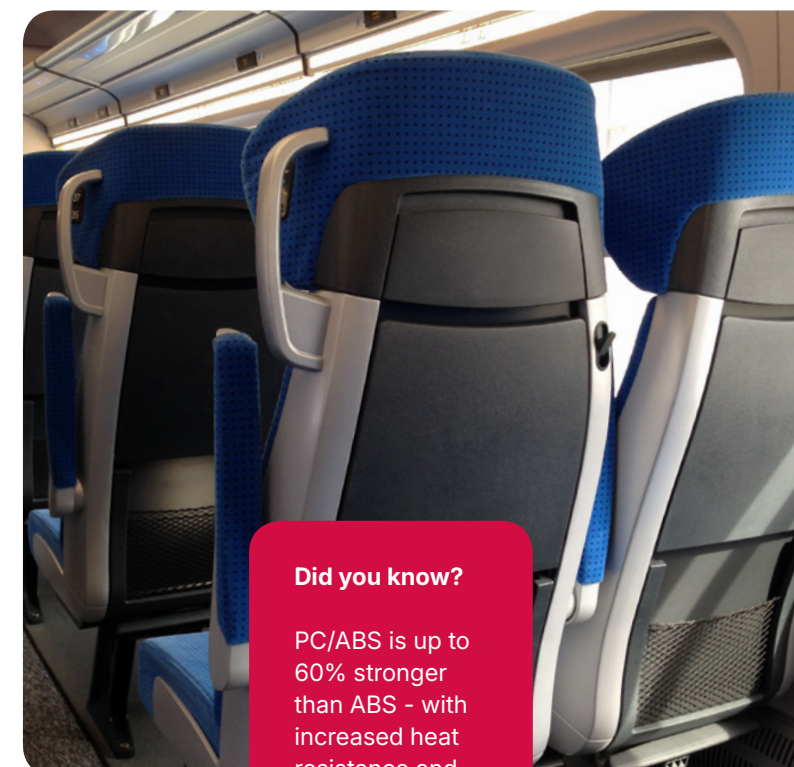
PC/ABS with a matt ABS surface layer.

PC/ABS ATECH® 5103.02-R118-7-8

PC/ABS-based product that meets Annex 6, 7 & 8 of the ECE R118.03 regulation, ensuring compliance with fire safety requirements for bus interiors.

Applications

Machine covers, interior automotive parts, ski boxes, demanding exterior automotive parts, tough industrial applications, advertising, thermoformed covers.



Did you know?

PC/ABS is up to 60% stronger than ABS - with increased heat resistance and easy formability.

PETG sheets

Easy to fabricate and thermoform without pre-drying

PETG is easy to fabricate and thermoform without pre-drying, hence faster cycle times and hence cost savings can be achieved. Thermoforming and bending can be done with great accuracy and with maintained visual clarity.

PETG high impact transparent sheets – GRIPHEN®

Besides transparent sheets, GRIPHEN® can be chosen in a wide range of colours and the unique frosty (satin) look. UV protection is available for most products. GRIPHEN® as a standard product is food approved.

PETG high impact opaque sheets – GRIPHTECH®

GRIPHTECH® is an opaque coloured co-polyester sheet which combines extremely good fabrication and thermoforming properties with good impact strength. The product has good fire performance, it is self-extinguishable and has low smoke generation during a fire.

We are experienced in extrusion of standard glossy colours as well as matt colours. Most products can be chosen with a UV protection.



High impact resistance



Various surfaces & colors with UV protection



Maximum flexibility in shaping



Self-extinguishing & low smoke emission



Approved for contact with food



Explore the full range of possibilities online

Product range

Transparent PETG



- GRIPHEN®**
Standard clear sheet.
- GRIPHEN® UV**
Clear sheet for outdoor use.
- GRIPHEN® COLOUR**
Transparent in colours and opal.
- GRIPHEN® COLOUR UV**
Transparent colours for outdoor use.
- GRIPHEN® FROST**
Matte anti-reflective surface.
- GRIPHEN® FROST COLOUR**
Matte surface in colours and opal.
- GRIPHEN® AR**
Anti-reflective structured surface.
- GRIPHEN® SAND**
Sand surface finish.
- GRIPHEN® COEX COLOUR**
Co-extruded coloured sheets.

Opaque PETG



- GRIPHTECH®**
Standard opaque sheet.
- GRIPHTECH® UV**
Opaque sheet for outdoor use.
- GRIPHTECH® COLOUR**
Opaque in colours.
- GRIPHTECH® COLOUR UV**
Opaque colours for outdoor use.
- GRIPHTECH® SAND**
Opaque with sand surface finish.
- GRIPHTECH® FROST COLOUR**
Opaque with matte surface finish in colours.

Applications

Indoor and outdoor signs, shelving and racking systems, food displays / bin / dividers, exhibition boxes, point of sale interior, thermoformed covers, vending machine faces, ski lifts, industrial equipment, machine covers and many different kinds of technical parts.



Did you know?

PETG retains clarity even under stress and impact, resisting whitening where other plastics turn cloudy.

Our cornerstones

We adhere to these four pillars of our company unconditionally, which is why our products are still of very high value

We pride ourselves on:

- The quality of our products and our service - the two go hand in hand and both are strongly embedded in our DNA.
- Flexibility - we creatively create tailor-made solutions for our customers, our broad product portfolio and deep knowledge of our customers' needs allows us to satisfy even the most demanding requests.
- Service - we are sensitive to what our customers expect from us and serve it without compromise.
- Speed - short order-to-delivery times, quick decision making and problem solving are standard for us.

Choosing our company for your needs is the best choice, and you already know why.



Additional services

Arla Plast can offer several additional services in order to save costs in later operations



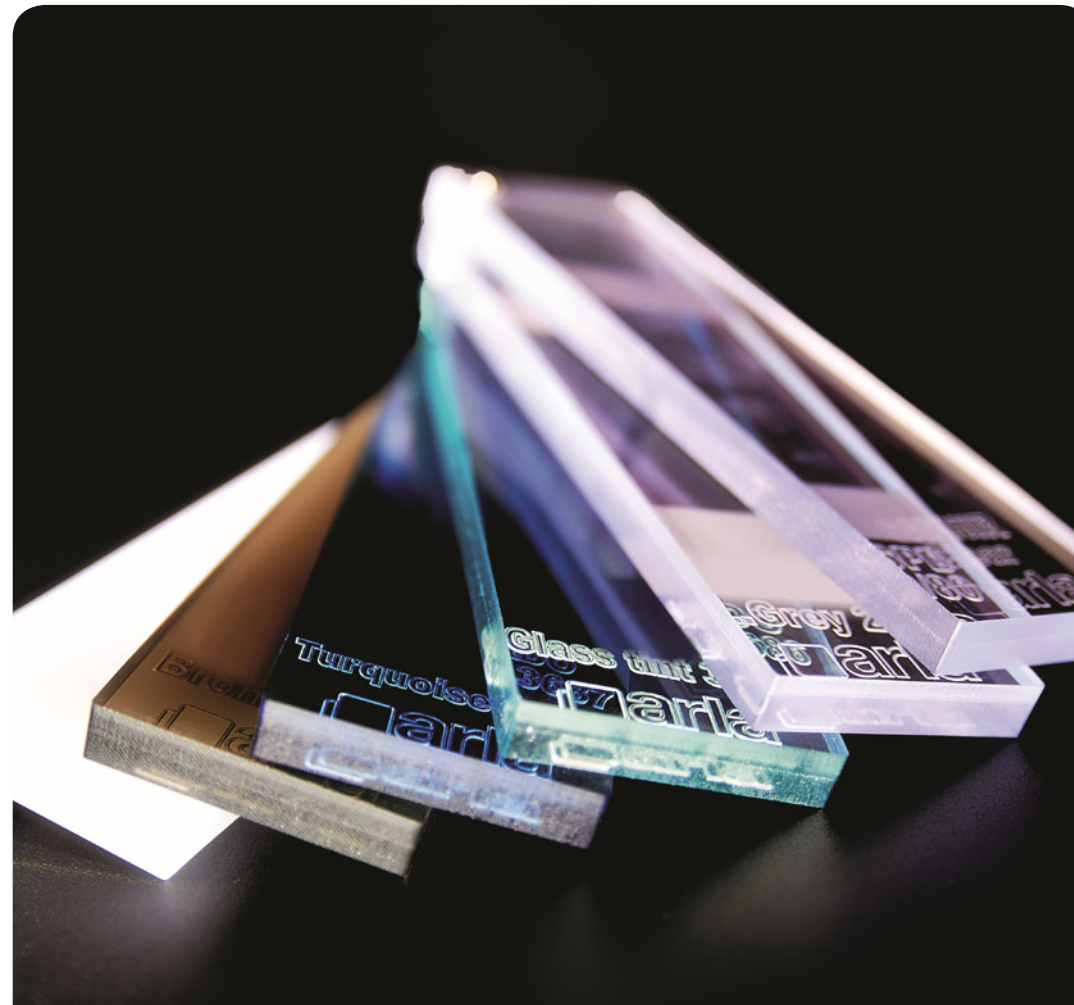


For more than half a century, we have been developing and manufacturing plastic sheets that meet the most demanding requirements and build long-term trust

At Arla Plast we have developed and fine-tuned the extrusion techniques for plastic sheets since the '60s. We have developed the professional knowledge over many years, the machinery resources, the feel for quality and the willingness to always do a good job. Our experience ensures that you receive a product which satisfies your needs.

Good product quality is our primary target to be a good supplier, but this is not enough. Thanks to the cooperation with our customers and suppliers we have learnt the meaning of high flexibility, delivery precision and good service in order to build trust and long-term relations.

Today Arla Plast is one of the leading extruders of plastic sheets in Europe. Every day we strive for becoming better by developing new products, new quality specifications and taking care by lowering our environmental impact. All in order to become and to remain your best long-term partner.





Arla Plast AB

Box 33
SE 591 06 Borensberg
Sweden

Visiting address:

Västanåvägen 2
591 75 Borensberg
Sweden

Phone +46 141 20 38 00
Fax +46 141 414 30
E-mail: info@arlaplast.com

Arla Plast s.r.o.

Královský Vrch 1982
CZ-432 01 Kadaň
Czech Republic

Phone: +420 474 698 030
Fax: +420 474 698 040
E-mail: infocz@arlaplast.com